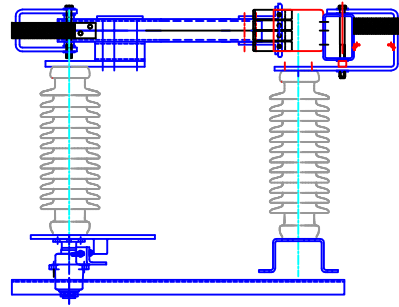


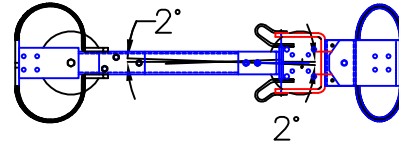
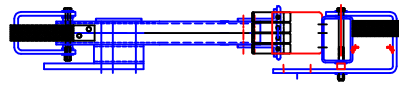
**1** Verify Structure is Level and Plumb  
Mounting Holes Match Installation  
Drawings **\*\*\*IMPORTANT\*\*\***

**2** Attach Bus or Cables

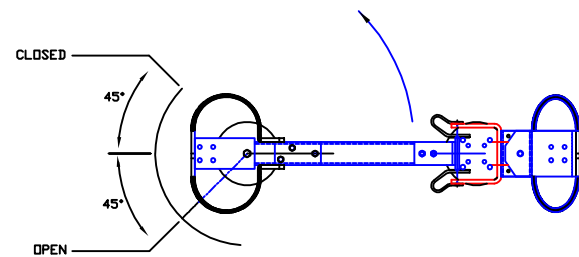


**3** Check Blade Depth In Jaw

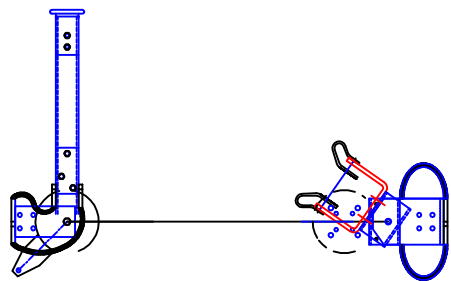
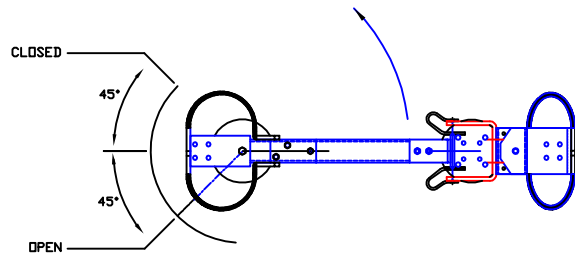
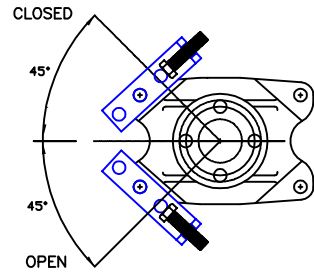
**4** Check Blade Angle  
Blade Angle Tolerance is  $\pm 4^\circ$



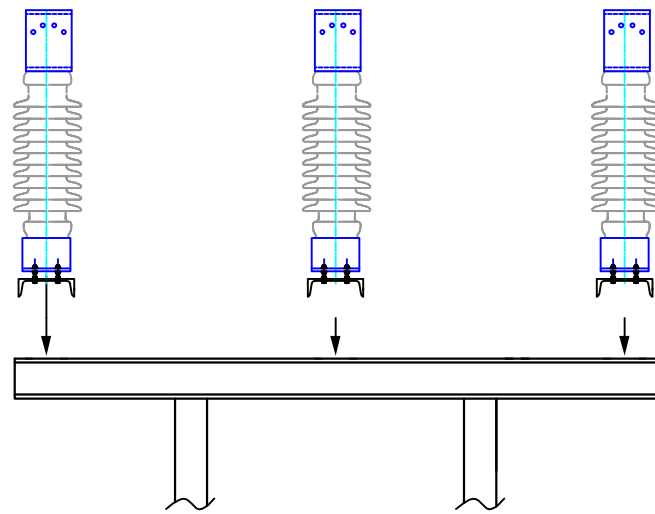
Adjust Closed Stop



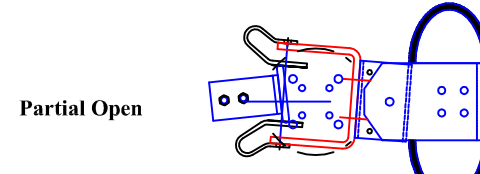
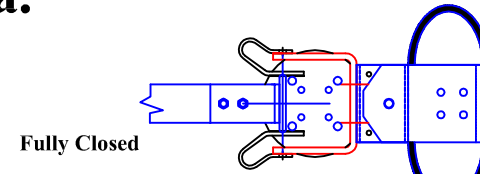
**6** Open / Close Stop Adjustment



**7** Install Single Poles on Structure

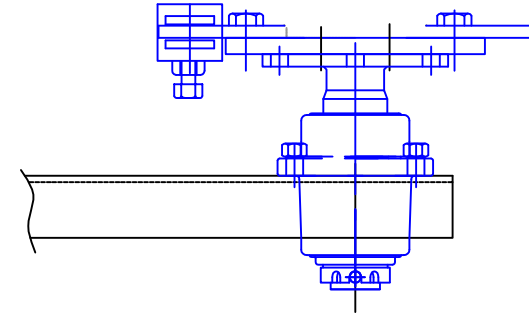


**5a.** Check Blade Opening

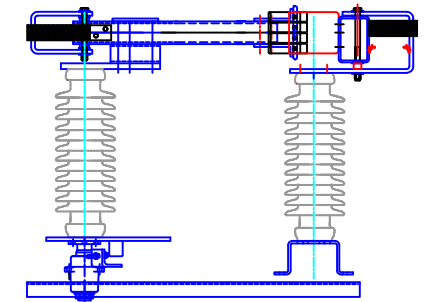
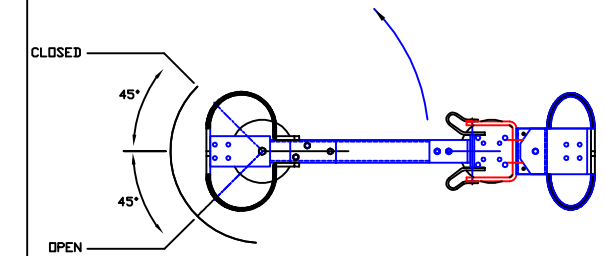


If Not No Drag!

Adjust Leveling Screws or shim to  
Eliminate Drag.



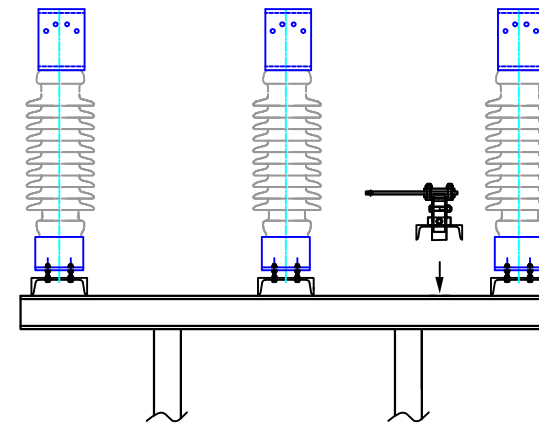
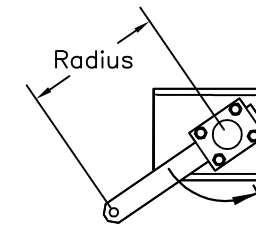
**5b.** Check Blade Closing



- Bent End of Interpole Linkage Drive Side Only
- Drive Side of Switch on Beavertail Side Only

**8** Mount Offset Bearing

Refer to Installation Drawings for Correct  
Operating Crank Length Radius and  
Angle, and Stop Crank Position



254 INDUSTRY DRIVE, BLAND VA. 24315, 276-688-3328

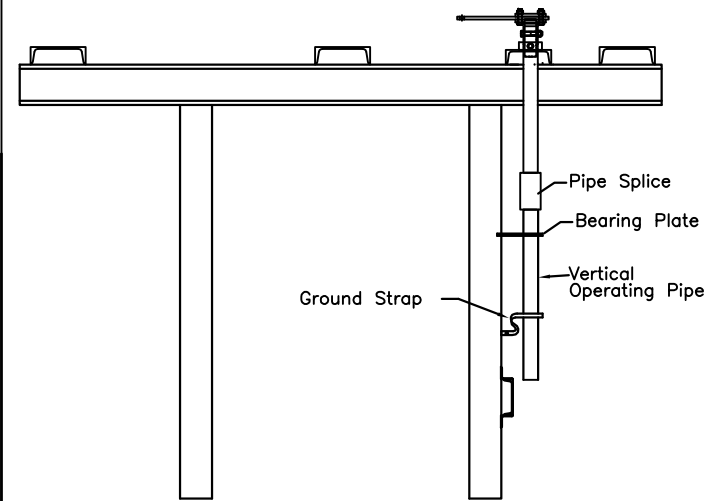
**FAS4 Side Break**

**Basic Installation Guide**

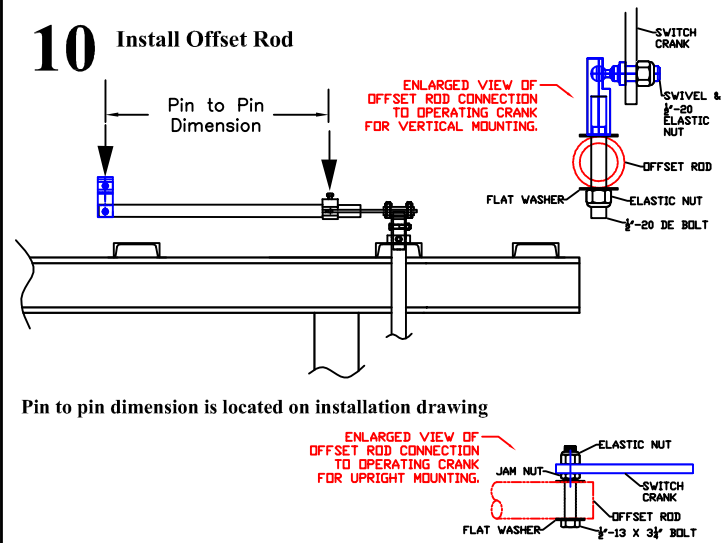
\*\* This manual should be used in conjunction with the factory drawings. To request a set of drawings please have the serial number of the switch and contact the factory at 276-688-3328.

## 9 Install Vertical Operating Pipe

Install Pipe Splice, Bearing Plate, Position Indicators, and Ground Strap



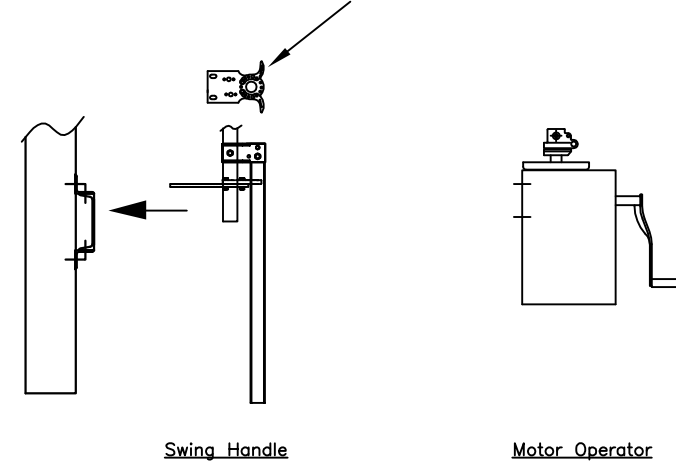
## 10 Install Offset Rod



Pin to pin dimension is located on installation drawing

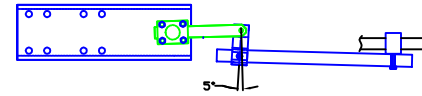
## 11 Install Operator

Adjustable Lock Plate With Position Indication

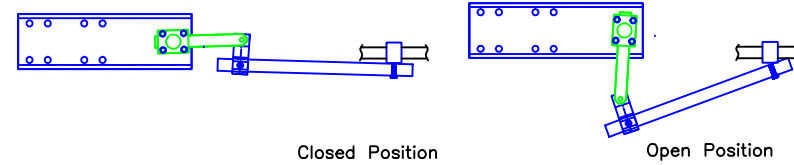


### Dead Center ~ "Toggle"

- Offset bearing crank travels past dead center.
- When operating the switch, the offset bearing should "snap" over dead-center in the closed position. This is also referred to as toggle. This serves as a signal to the operator that the switch is fully closed. This is also a safety feature that insures the switch is locked in the closed position.



## 12a Adjust Drive Phase



Pulling Switch Open

### Shortening Offset Rod

- Reduces toggle pressure in closed and adds pressure to open position.
- Increase blade opening and decrease blade closing.

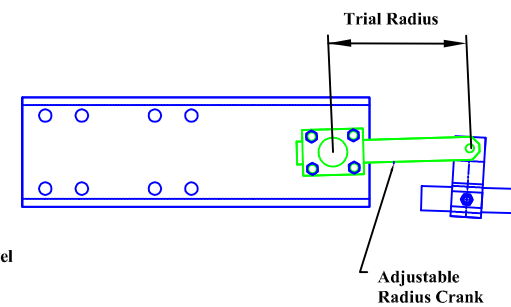
### Lengthening Offset Rod

- Reduces toggle pressure in open and adds pressure to closed position.
- Increase blade closing and decrease blade opening.

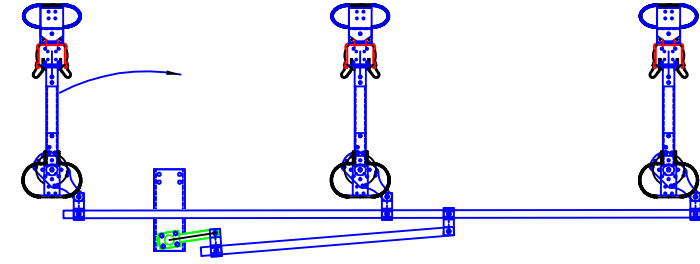
## 12b Adjust Drive Phase

The adjustable radius crank adjustment increases or decrease throw to the open and closed position.

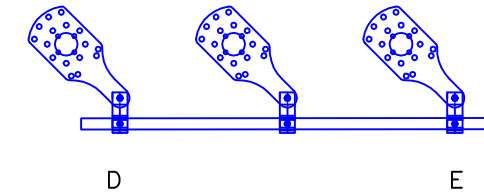
- Lengthening increases travel and toggle pressure in open and closed.
- Shortening reduces travel and toggle pressure in open and closed.



## 13 Install Interphase Linkage



## 14 Adjust Interphase Linkage



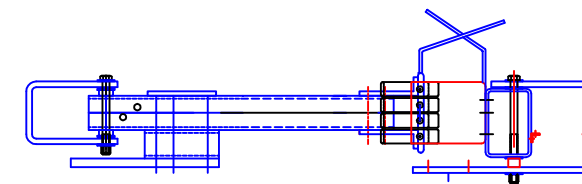
### Interphase Pipe "D"

- Shorten will close more and open less.
- Lengthening will open more and close less.

### Interphase Pipe "E"

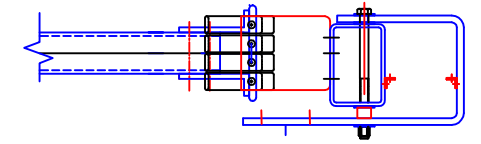
- Shortening will open more and close less.
- Lengthening will close more and open less.

## 15 Install Arcing Horns and Corona Rings (If Applicable)

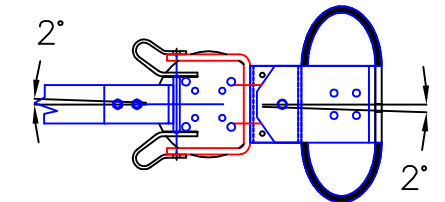


## 16 Final Checks

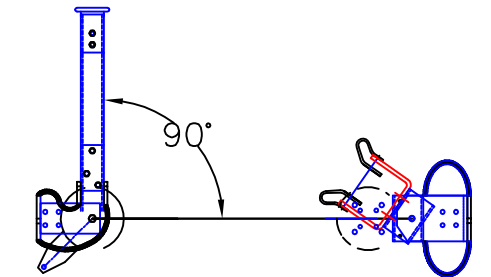
a. Blade Centered in Jaw



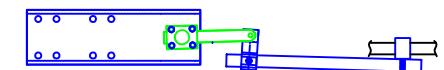
b. Blade Contact Angle is  $\pm 4^\circ$  in Jaw



c. Blade Opening



d. The offset bearing toggles in the close position.



e. All jaw mounting bolts are tightened with switch in close position.

f. Tighten all locking nuts and pierce bolts.