

## Pascor Atlantic Advantages



## Applications

- 105 years of continuous service to electrical industry
- IEEE & NEMA standards met
- Shortest lead time in the market
- Quality products and processes
- Enhanced factory capabilities
- Dedicated workforce
- High precision machinery
- Maintenance free bearings
- On time delivery
- Extensive technical and field service support

# FAS 4

- Mounting: vertical, horizontal or inverted
- 7.5-138 kV
- 1200-2000 AMPS
- Line disconnecting, circuit breaker by pass and isolation and transformer isolation
- Reduces overhead clearance issues

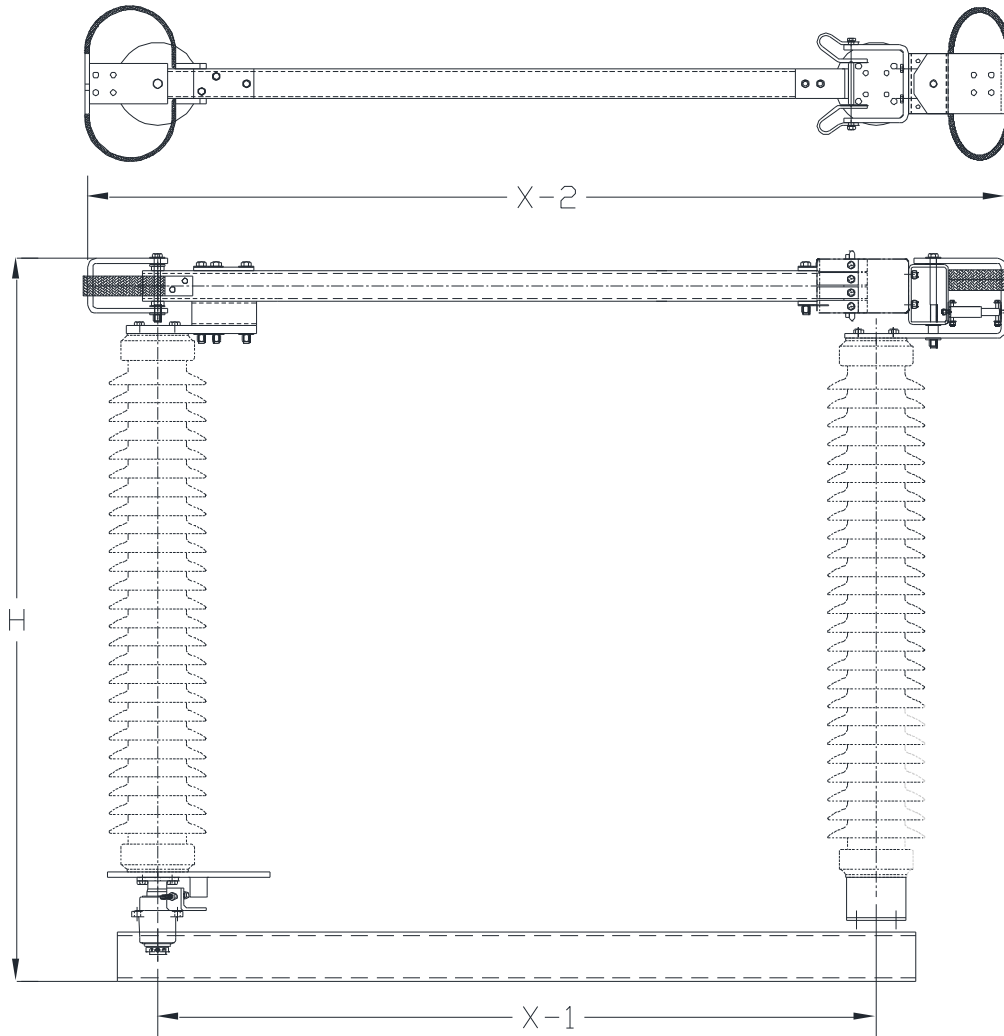
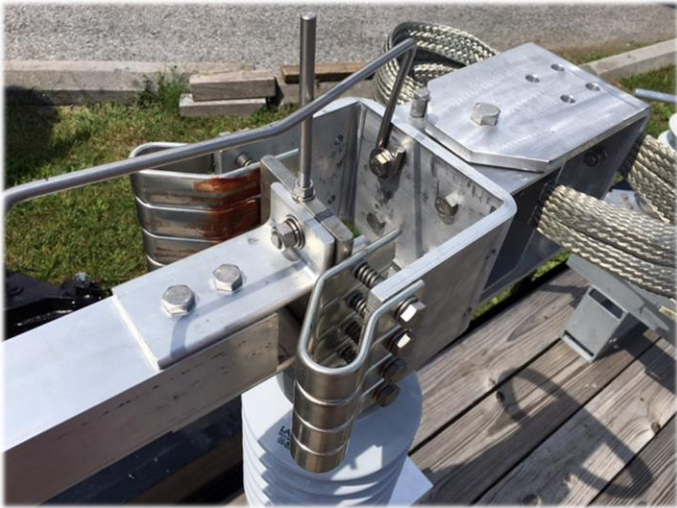
## Standard Accessories

- Arcing horns
- Tin plated copper components used in critical current transfer areas
- Leveling screws
- Silver to Silver contacts upon request
- Sliding link interphase rods

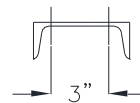
## Performance Features

- Self-cleaning/wiping jaws
- Easily field replaceable contacts
- Low maintenance
- Can be used with: Swing handle, worm gear or a motor operator
- Reverse loop contact configuration
- Hard-drawn extruded aluminum materials
- 3/4" Ice breaking
- Tested to 1,500 plus open/close operations completed
- Maintenance free bearings

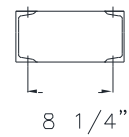




7.5-46KV Standard with Single Channel Base



69-138KV Standard with Double Channel base



KV	Height	Insulator Spacing (X-1)	Length (X-2)
138	6'-1/2"	6'-0"	7'-8"
115	5'-3 1/2"	5'-0"	6'-8"
69	4'-1/2"	3'-6"	5'-2"
46	3'-15/16"	2'-6"	4'-2"
34.5	2'-8 13/16"	2'-0"	3'-8"
23	2'-4 13/16"	2'-0"	3'-8"
15	2'-13/16"	2'-0"	3'-8"
7.5	1'-10 1/4"	2'-0"	3'-8"

Pascor Atlantic  
 (276) 688-3328  
 254 Industry Drive  
 Bland, Virginia 24315  
[www.pascoratlantic.com](http://www.pascoratlantic.com)